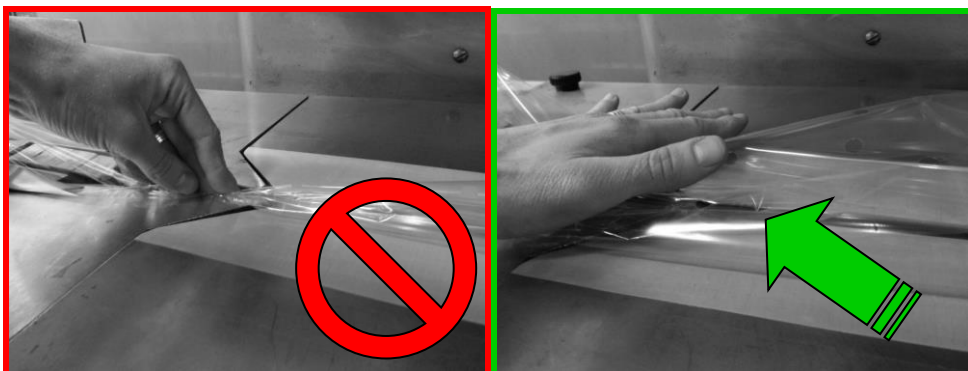


1. The machines can only be used by employees who completed the instruction course for Flowpack.
2. Do not put hands or fingers near rotating parts or elements.



3. Do not put the foil under the plates with your fingers.



4. Do not touch the chisel with your bare hands or fingers.



5. Immediate notify your chef in case of hazards or problems.
6. During cleaning and maintenance always activate the Emergency stop.

I have read and understood the instructions and agree.

Date:

Name:

Staff nr Greenpack:

Signature: